

SHARP®

MULTIFUNCTION DOCUMENT SYSTEM

VERSATILE PERFORMANCE FOR VIRTUALLY ALL YOUR SMALL WORKGROUP BUSINESS NEEDS.



AR-208S
AR-208D



"Editor's Choice"
Award 2009

Shown with optional 2nd paper tray.



VERSATILE FEATURES IN A COMPACT DESKTOP DESIGN.

The new Sharp AR-208S and AR-208D Multifunction Document Systems are big on performance, but compact in size. Designed for small offices and workgroups, the AR-208S and AR-208D deliver all the required features for fast-paced, small office environments. With 20 page-per-minute copying/printing and integrated color PC scanning, your office workflow won't miss a beat. A 50-sheet document feeder provides standard 2-sided scanning for extra efficiency, as well as duplex printing and copying (AR-208D models). The cost-effective, consumable system utilizes a three-component system that's easy to replace and easy on your wallet. And since business never stands still, the AR-208S and AR-208D offer flexible options to add Super G3 faxing, networking and web-based management...so you'll be ready for anything.

HIGH-PRODUCTIVITY FEATURES

- 20-ppm compact desktop printer/copier with high-quality 600 dpi output
- Up to 100-page electronic sorting and offset output stacking allows copying of multiple sets quickly and efficiently
- 50-sheet Reversing Single Pass Feeder with standard 2-sided PC scanning
- Flexible paper handling includes a 250-sheet paper supply, upgradeable to 500 sheets
- 50-sheet multi-purpose bypass tray handles different size paper ranging from 3 1/2" x 5 1/2" up to 8 1/2" x 14" as well as envelopes, labels, and transparencies
- Scan and send documents to a variety of destinations for easy distribution
- Optional Network Expansion Kit with 10/100 base TX Ethernet, Network PCL®6 Printing and Network Scanning with ImageSEND technology
- PostScript®3™ option with IPv6 support
- Optional Super G3 fax kit with 118 auto-dial destinations
- 25% to 400% zoom magnification with eight preset modes for easy image-to-paper sizing

BUILT-IN COLOR SCANNING WITH SHARPEDESK® AND IMAGESEND

Streamline your workflow and increase productivity by converting both color and black and white documents into digital files that can be printed, stored or e-mailed. Scanning is quick and easy with Button Manager, a built-in utility that automatically scans your files to Sharpdesk®, E-mail, Fax, OCR, Microsoft Word® or other designated application. Easily edit, store and share scanned files with Sharpdesk Document Management software, now with Vista® support. And for even more functionality, simply add the optional Network Expansion Kit to distribute files with convenient Sharp ImageSEND technology. Share documents with Send to FTP, Send to E-mail, Send to Desktop and Send to Print.



ImageSEND

Send to FTP

Send to Print



Send to E-mail

Send to Desktop

STREAMLINE DOCUMENT WORKFLOW AND ENHANCE PRODUCTIVITY WITH ADVANCED FEATURES.

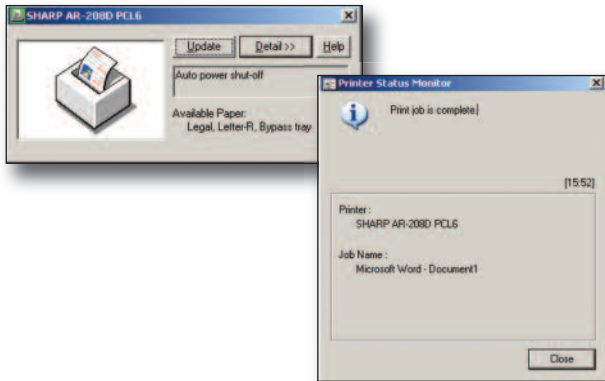
HIGH-QUALITY PRINTING

The Sharp AR-208S/208D offers impressive 600-dpi resolution for crisp, razor-sharp text. Standard USB printing with JBIG compression and a high-performance print controller automatically compresses files so even large jobs print quickly and efficiently. With built-in electronic sorting, offset stacking and auto duplexing (AR-208D only) it's easy to produce multiple-page documents in a snap. Robust paper handling abilities include a 50-sheet Reversing Single Pass Feeder, standard 250-sheet paper supply and an optional 250-sheet paper cassette.

Add even more versatility with the optional Network Expansion Kit. With PCL6 emulation and optional Postscript 3, the AR-208S/208D can support cross-platform workgroups with ease.

EASY-TO-USE SHARP UTILITIES

Sharp's user friendly, integrated software makes managing your AR-208S/208D Document Systems effortless. With Printer Administration Utility (PAU), IT professionals can virtually manage any SNMP compliant printer on your network from one interface. Designed for desktop users, Printer Status Monitor allows users to view printer conditions, check paper status and more...all through an easy-to-use interface.



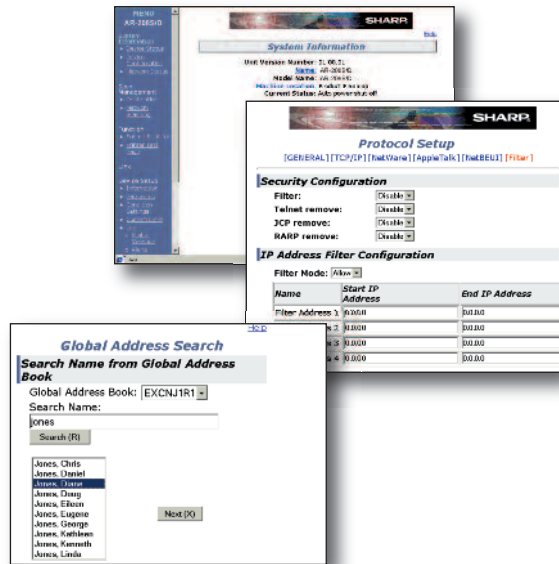
24/7 TRAINING WITH MY SHARP™

Managing all of the advanced features of your Sharp product is simple and easy with My Sharp. This dedicated customer training website is customized to your AR-208S/208D and allows you to locate resources and find information specific to your configuration, truly helping you maximize your investment.



CONVENIENT, WEB-BASED MANAGEMENT

Sharp's online management tools offer both users and administrators time-saving features, including scan destination management, Remote E-mail Diagnostics, device configuration, and more. A familiar, easy-to-use interface provides sophisticated controls for monitoring printer usage and managing security features.



Shown with Super G3 Fax Kit Option installed

AR-208S/AR-208D SPECIFICATIONS

COPIER SPECIFICATIONS

Type:	AR-208S: Digital simplex copier-based desktop MFP AR-208D: Digital duplex copier-based desktop MFP
Standard Functions:	Copy/Print/PC Scan color (or monochrome)
Copy System:	Dry electrostatic transfer system
Originals:	Sheets, bound documents
Original Size (Max):	8.5" x 14"
Copy Size:	Min. 5.5" x 8.5", Max. 8.5" x 14"
Copy Speed:	20 copies per minute (8.5" x 11")
Continuous Copy:	Max. 99 copies
First Copy Out Time:	8 sec. (ready) 25 sec. (preheat) 60 sec. (auto shut-off) ¹
Warm Up Time:	0 seconds (when Energy Saver mode is not enabled) ¹
Zoom Range:	25% to 400% in 1% increments (with SPF/RSPF 50%-200%)
Fixed Zoom Mode:	25%, 50%, 64%, 78%, 100%, 129%, 200%, 400%
Exposure System:	Fixed optical source, slit exposure (stationary platen)
Paper Feed System:	Standard: (1) 250-sheet paper cassette with automatic feed Standard: (1) 50-sheet manual bypass tray Optional: (1) 250-sheet paper feed unit
Original Feed System:	50-sheet reversing single pass feeder (RSPF)/document glass
RSPF Feeding:	Approx. 14 originals per minute (letter/100%/simplex), original weight 15 to 24 lb. Bond
Paper Type:	Paper Cassettes: 15-21 lb. standard or recycled bond paper Bypass Tray: up to 50 sheets 15-34 lb. standard or recycled bond paper; post cards/envelopes (#10 Monarch)/OHP film/labels one sheet feed
Memory:	64 MB (shared)
Copy Resolution:	Scan: 600 dpi, output: 600 dpi
Exposure Modes:	Photo mode: 600 x 600 dpi Auto exposure: 600 x 300 dpi (manual 5 steps)
Grey Scale:	256 gradations/2 levels
Copy Features:	Electronic sorting, 2-in-1 copy, offset stacking, auto tray switching, margin shift, zoom, variable memory adjustment, auto shut off, and duplex copy/print (AR-208D)
Output Tray Capacity:	200 sheets (face down)
Offset Stacking:	Standard paper shifter (offset stacks sets by 1 inch in output tray)
Fusing System:	Heat roller
Developer System:	Magnetic brush development
Light Source:	Tri-color CCD light source (RGB)
Power Requirement:	AC 120 V, 60 HZ, 8 Amps
Power Consumption:	Max 1000 W, auto shut off 12.5 W
Operating Conditions:	Temperature: 50 degrees to 86 degrees F, Humidity: 20% to 85%
Weight:	AR-208S: Approx. 43.9 lbs; AR-208D: Approx. 45.4 lbs.
Dimensions:	AR-208S: 20 1/2" (w) x 17 3/4" (d), x 14 3/8" (h) AR-208D: 20 1/2" (w) x 17 3/4" (d), x 14 3/8" (h)

JBIG SPEED-ENHANCED PRINTER FUNCTION (STANDARD)

Emulation:	Sharp SPLC host-based controller with JBIG compression
Print Speed:	20 pages per minute one side (letter) with ROPM
First Print Time:	8 seconds (without data transfer time; ready)
Resolution:	600 dpi
Operating System:	Windows Vista®, 98/ME, 2000, XP
Software:	Print driver, Printer Status Monitor
Scan Once Print Many:	Yes
Interface:	Standard: USB 2.0
Memory:	Shared
Features:	Offset print, status monitor, 2-up/4-up printing, fit to page, watermark, duplex printing (AR-208D only)

1 May vary depending on product configuration, machine settings and operating and/or environmental conditions.

2 Resolution settings higher than 600 x 1200 dpi are interpolated.

3 Color scanning at 600 dpi requires 256 MB memory expansion.

4 Based on ITU-T Test Chart # 1 standard resolution. Actual transmission time will vary according to line conditions.



SCANNER FUNCTION (STANDARD)

Type:	Flat head full color/monochrome PC scanning system
Resolution:	Basic: 600 x 1200 dpi, setting range 50 – 9600 dpi ²
Operating System:	Windows Vista, 98/ME, 2000, XP
Original Type:	Sheets/books up to letter/legal size
Scanning Method:	Original cover/SPF/RSPF
Output:	8 pixels/bit, A/D 16 bit
Protocol:	TWAIN, WIA (Windows XP)
Interface:	USB 2.0 (compatible with USB 1.1)
Software:	Sharpdesk® document management software, Button Manager, Composer (single user)
PC Scan Destinations:	5 preset PC scan destinations can be configured using Button Manager
File Formats:	BMP/JPEG/TIFF/PDF

PCL6 NETWORK PRINTING/SCANNING EXPANSION KIT (OPTIONAL)

Features:	PCL6 network printing and network scanning with web-based management function
Standard Memory:	64 MB standard, expandable to 320 with 256 MB DIMM
Client PC Requirements:	IBM PC/AT compatible (P3/500 MHz recommended), 100 MB available hard disk space, and 800 x 600 dpi screen resolution
Operating Systems:	Windows Vista, 98/ME/2000, Windows XP, Mac OS® 9 x, 10.1-10.4.10 (when using AR-PK1N PostScript Kit)
Network Protocols:	TCP/IP, IPV4/IPV6, IPX/SPX (Netware), NetBEUI, and EtherTalk/AppleTalk®
Interface:	RJ45 Ethernet; 10/100baseT
Utilities:	Web-based management, NIC Manager, integrated software installer, Printer Administration Utility (PAU), Printer Status Monitor, Online manual
Print Emulation:	PCL6/PCL5e/PS3 (option)
Print Speed:	20 pages per minute one side (letter)
Print Resolution:	600 dpi
Print Features:	2-up/4-up printing, fit to page, auto paper select, booklet print, front cover print, direct print, watermarks, and duplex print (AR-208D)
Scanning Resolution:	Up to 600 dpi ³
Operating Systems for Scanning:	Windows Vista, 98/ME, 2000, XP
Scanning Features:	Scan to E-mail, Scan to Desktop, Scan to FTP, Scan to URL, and Scan to Print
Scanning Formats:	BMP/JPEG/TIFF/PDF
Scanning Software:	Sharpdesk® document management software, includes OCR and Sharp Composer (3-user license)

SUPER G3 FAX KIT (OPTIONAL)

Modem Speed:	Super G3 (up to 33.6 kbps) ⁴
Transmission Time:	3 Seconds ⁴
Compression Type:	MH, MR, MMR, JBIG
Max. Original Size:	Legal
Resolution:	Standard/Fine/Superfine
Memory:	2 MB
Job Memory:	Up to 50
Rapid Dials:	18
Speed Dials:	100
Group Dials/Broadcasting:	18 groups/100 destinations

OPTIONAL EQUIPMENT AND SUPPLIES

AR-D33:	250-sheet paper tray
AR-FX13:	Super G3 Fax Kit
AR-NB2A:	PCL6 Network Printing/Network Scanning Expansion Kit
AR-PK1N:	PostScript®3™ Compatible Expansion Kit (requires AR-NB2A)
AR-208ABD:	Copier Stand (with door)
AR-208MT:	Toner Cartridge
AR-208MD:	Developer
AR-152DR:	OPC Drum



SHARP ELECTRONICS CORPORATION
Sharp Plaza, Mahwah, NJ 07495-1163
1-800-BE-SHARP • www.sharppusa.com

Design and specifications subject to change without notice. Sharp, My Sharp, Sharpdesk and all related trademarks are trademarks or registered trademarks of Sharp Corporation and/or its affiliated companies. Microsoft Word, Windows, Windows Server, Windows XP and Windows Vista are trademarks or registered trademarks of Microsoft Corporation. All other trademarks are the property of their respective owners.