

SHARP®

POWERFUL PERFORMANCE, ENHANCED OPERABILITY, ENERGY EFFICIENT



MX-2610N MX-3110N MX-3610N



Drag and drop touch control for intuitive operation!

A vision at work—MX-2610N/3110N/3610N—provides your business with the tools you need to gain the competitive advantage.

GROUNDBREAKING, FULL-COLOR LEDGER-SIZE DOCUMENT SYSTEMS

Innovation

Sharp's new MX-2610N/3110N/3610N color series document systems combine the simplicity of touch-screen menu navigation with robust multi-tasking workflow features that can elevate your office productivity to new levels. A large 10.1" (diagonally measured) high-resolution tilting, touch-screen display offers groundbreaking real-time image preview with intuitive flick and tap editing to help ensure your documents are produced accurately and without waste. The new MX color series also offers many advanced features such as a fully customizable home screen, dynamic action menus that provide feature-specific guidance, and an available full-size retractable keyboard for easy data entry. Plus, with Sharp's enhanced second-generation micro-fine toner technology and true 1200 x 1200 dpi print resolution, the new MX series can help your business produce professional looking color documents in-house with breathtaking image quality that is also economical. The new MX-2610N/3110N/3610N color series has been built on the latest Sharp OSA® Development Platform, making integration with network applications and cloud services easier than ever. And, with Sharp's Industry leading security platform with standard 256 bit data encryption and overwrite protection, you can rest assured that your intellectual property is well protected.



VERSATILE

MULTI-FUNCTIONAL

POWERFUL

MULTI-TASKING

INTUITIVE

Advanced features plus multi-functional capability allow you to meet tomorrow's document needs today.

- Large 10.1" **high resolution touch-screen** display with **tilt view**
- **Real-time image preview** feature with flick, tap and slide menu navigation
- Fully **customizable home screen** feature enables users to add custom **backgrounds** and **custom icons**, change the display language and more
- **Action menus** to provide users with **feature-specific guidance**



- Enhanced second generation micro-fine toner technology offers sharp, **high quality images** page after page
- **1200 x 1200 dpi printing** provides clear, crisp images even on jobs with fine detail
- Industry leading **ImageSEND™** function scans documents to USB devices, network folders, email and more
- Scans documents at up to **50 images per minute** in both Black and Color
- Network ready PCL®6/PCL5c **printing system** with **direct print** function and available **Postscript®** and **XPS** options
- Robust 86 GB **document filing system** with thumbnail view and image preview features for easy identification
- Supports the latest **Sharp OSA Development Platform**, enabling businesses to easily integrate with **network applications and cloud services**
- **Flexible paper handling** system feeds up to 110 lb index through paper trays and up to **140 lb index** through bypass tray
- **Super G3** fax option with intelligent **inbound routing**
- Supports Sharp's **award-winning** security platform with **standard 256 bit data encryption** and up to 7 times **overwrite protection**
- **Energy efficient belt fusing system** offers low power consumption, fast warm up and enhanced print quality



REVOLUTIONARY MFP FEATURES TO STREAMLINE YOUR WORKFLOW



Full-size retractable keyboard simplifies data entry.

Flexible design to meet the needs of your environment.

A Smart Touch-Screen Helps You Get Your Work Done Fast

The new MX-2610N/3110N/3610N workgroup color document systems feature a **10.1"** (diagonally measured) **high-resolution LCD** that goes beyond basic touch-screen menu navigation. With advanced features that include **flick, tap, and slide**, you can quickly access the powerful functions of the new MX color series. In addition, a **tilting display panel** provides enhanced accessibility. A built in full-size retractable keyboard makes data entry quick and easy.*



Easily edit documents in scan preview mode.

Easily Check and Edit Your Original Document

Save time and help reduce waste by correctly executing your copy or scan job the first time. With Sharp's **real-time scan preview and edit** functions, you can quickly rotate or delete pages, insert blank sheets, remove artifacts, change the color mode, even check the staple position before executing your job. Dynamic action menus provide **feature-specific guidance**, so it is easy to determine your choices for each operation. For comprehensive, step-by-step instructions on any operation, simply open the **on-line user manual** and navigate to the feature you need.

High Image Quality You Expect with the Performance You Need

The new MX-2610N/3110N/3610N workgroup color document systems utilize a powerful multi-tasking controller designed to quickly execute complex copy, print and scan jobs even in busy office environments. Plus, with print speeds of **26ppm, 31ppm, and 36ppm**, the new MX color series can help elevate your office productivity to new levels. With **1200 x 1200 dpi** print resolution and Sharp's enhanced second-generation micro-fine toner technology, your business **can produce professional looking color documents** with breathtaking image quality.



Intuitive copy screen shows options on the left and menu guidance on the right.

Flexible Configurations for Today's Unique Office Environments

The new MX color series offers a flexible paper handling system that is also user-friendly. With **rugged paper tray handles** for easy access and available **on-line paper capacity for up to 5,600 sheets** with options, the MX is ready when you are. A standard 100-sheet reversing document feeder combined with automatic trayless duplexing, electronic sorting and integrated offset stacking, allow you to complete even large jobs in a snap.

Advanced Finishing Adds the Final Touch

The MX series offers a choice of **two high-performance finishers** that can give your documents a professional look and feel. Choose from a **compact inner finisher** or floor-standing **saddle-stitch finisher**. Both finishers offer three-position stapling and an available 3-hole punch.



Available paper capacity stores up to 5,600 sheets.

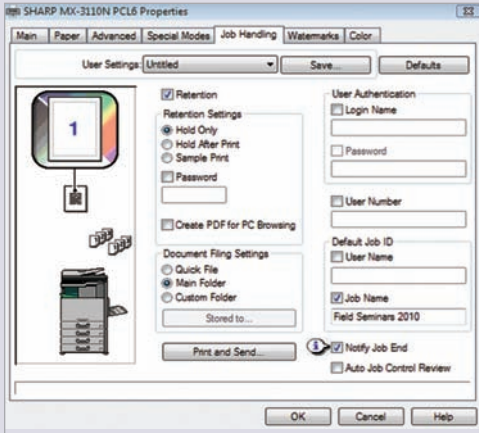


MX-3610N shown with saddle-stitch finisher.

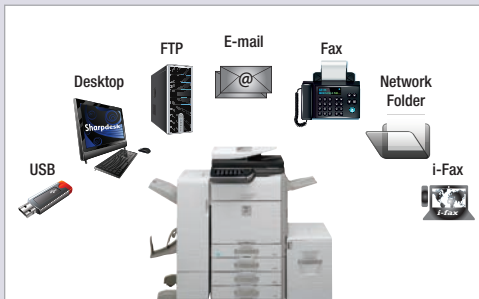


MX-3610N shown with compact inner finisher.

*Standard on MX-3110N/3610N.



With Sharp's advanced job handling, you can retain print jobs on the MX hard drive for reprinting at a later date, you can even choose to create a PDF for browsing the thumbnail from a PC.



Sharp's integrated network scanning offers one-touch document distribution to up to seven destinations.



Sharp's document filing system with thumbnail preview makes it easy to locate and retrieve stored jobs.

Advanced technologies deliver outstanding output quality, flexible document distribution at your fingertips.

Exceptional Print Quality with Professional Output

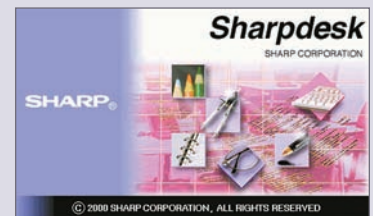
With the MX-2610N/3110N/3610N color series, your business can produce brilliant, high-color documents, as well as razor-sharp B&W documents. Plus, with **1200 x 1200 dpi resolution**, even documents with fine detail will look great! Easy-to-use print drivers allow you to set up complex jobs with just a few mouse clicks. The **optional Postscript driver** delivers extensive color control options, so you can manage color consistency right from your desktop. For even more flexibility, add the **optional XPS kit**. With Sharp's **advanced job retention** features, jobs can be stored on the MX hard drive to be reprinted again and again by walk-up users or from the embedded web page.

Integrated Network Scanning

With Sharp's powerful **ImageSEND** technology, you get one-touch distribution features that centralize document workflow, reduce mail costs and help save time. With up to **seven destinations**—E-mail, Desktop, FTP, Network Folders (SMB), USB, Fax and Internet Fax—getting your document where it needs to go is as easy as pushing a button. High-volume workgroups will appreciate the **Send to Group** mode that allows you to mix group broadcast to E-mail, Fax, and Internet Fax for increased efficiency.*

Convenient E-mail Distribution

With Lightweight Directory Access Protocol (LDAP), there's no need to manually enter a recipient's complete e-mail address. Simply enter the first few characters and the MX automatically searches and displays a list of matching names. And, with **Sharpdesk®** personal document management software, users can easily organize their scanned documents and integrate them into everyday workflow.



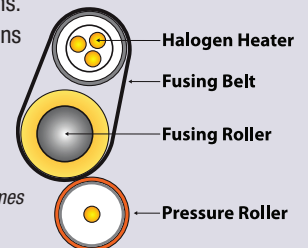
Sharpdesk personal document software.

Innovative Document Filing System For Easy Access

Sharp's easy-to-use document filing system provides up to 86 GB of hard drive space to **store frequently used files** like forms, templates and reports. With **thumbnail preview** mode, stored jobs can be located and retrieved quickly. An advanced backup system and PIN-access security helps ensure your files are safe. For critical environments, an optional **back-up hard drive** is available.

Advanced Energy Saving Features

Sharp's new MX color series utilizes several energy efficient technologies to minimize power consumption and maximize energy savings. An **LED exposure lamp** reduces power significantly when compared to conventional exposure lamps. A customizable seven-day power management scheduler allows businesses to define the days and times when power will be turned-on and turned-off. Also, with Sharp's **Auto Power Management** function the MFP can be set to shut-off automatically based on usage trends. Sharp's **Eco-Scan** mode can **shut-off the fuser** when scanning documents, previewing images, faxing and other operations. A state-of-the-art **belt fusing system** consumes less power, shortens warm-up time and helps eliminate roller marks sometimes caused by conventional fusing.



State-of-the-art belt fusing system consumes less power and shortens warm-up time.

*Some features require optional equipment.

INTUITIVE USER INTERFACE ON 10.1-INCH COLOR LCD...

Sharp's new high resolution touch-screen display offers the customization and ease-of-use your business needs to elevate your office productivity to the next level. With the ability to change background screens, the layout and naming of the function keys, language display setting and more, you can quickly set up a custom user interface that meets the needs of your office. Whether your MFP requirements are simple or complex, the MX-2610N/3110N/3610N color series document systems can help you get the job done fast!



SHARP
MX-3610N

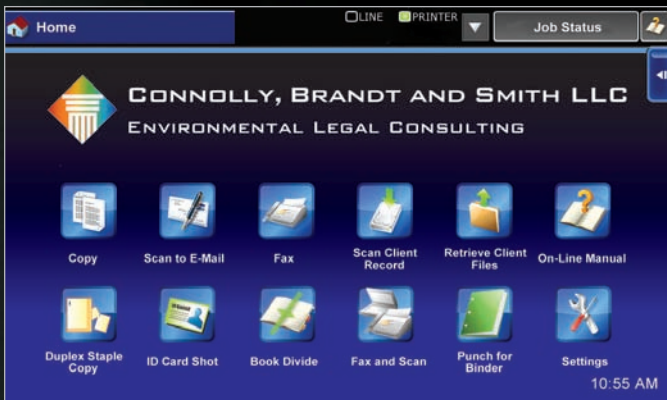
NAVIGATES YOU SMOOTHLY THROUGH ADVANCED MFP FUNCTIONS



Change the Theme: Easily change the menu colors and icon layout to suit the preferences of users in your office.



Change the Language: Walk-up users can choose from 24 different display languages with just a few key strokes.



For Legal Environments: Set up custom keys for client files and other frequently used functions.



For a College Campus Office: Set up a simple screen for walk-up users to retrieve applications and course offerings.



For Medical Environments: Set up custom keys to store and retrieve insurance information, prescriptions and more.



For Financial Environments: Store and retrieve monthly financial reports, scan loan applications and more.

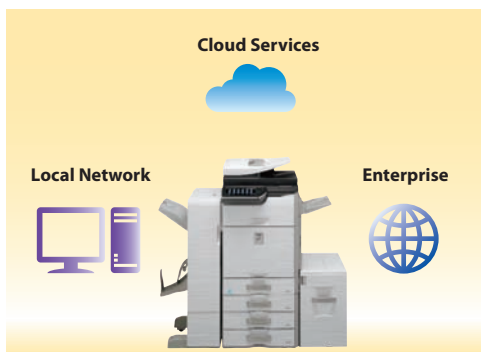


GET MORE OUT OF NETWORK RESOURCES



Sharp OSA® technology at a glance

- Automate tasks and save time with seamless integration with network applications and cloud-enabled services.
- Virtually eliminates repetitive tasks and streamlines workflow, increasing efficiency.
- Maximize your return on investment with tighter integration among IT assets.
- Industry standard programming leads to faster deployment of new solutions.



Sharp OSA Technology allows businesses to leverage the power of their network applications, back-end systems, even cloud-enabled services

Streamline your document workflow and enhance your productivity with Sharp OSA® Technology.

Integrating With Network Applications and Cloud Services Has Never Been So Easy

The MX-2610N/3110N/3610N color series offers **powerful document workflow capabilities** to help businesses leverage their network infrastructure, cloud-enabled services and more! While others are limited to a small circle of productivity, the Sharp OSA Development Platform allows businesses to leverage the power of their network applications, back-end systems, even cloud-enabled services, right from the touch-screen panel of the new MX color series.

Save Time, Increase Efficiency

You'll save time and increase the efficiency of everyday tasks with Sharp OSA Technology because it can be virtually seamless to the user. Any MX-2610N/3110N/3610N anywhere in the organization can display choices that were once only available on a desktop PC. With **one-touch access** to business applications via Sharp OSA integration, you can start and finish a document distribution task without worry.

Customized Integration

Sharp OSA Technology also provides **powerful customization**. With the ability to personalize applications and processes specific to your business, Sharp OSA Technology can help eliminate redundancy and **streamline workflow**, helping to save time and **optimize productivity**. The latest version of Sharp OSA Technology can reach beyond the firewall, enabling cloud-based applications over the internet. And since Sharp OSA Technology utilizes industry-standard network protocols such as SOAP and XHTML, third party software developers can deliver customized solutions to your business faster than ever.

The Convenience You Want With the Security You Need

The MX-2610N/3110N/3610N color series with the Sharp OSA Development Platform is the logical choice for providing fast, **flexible access to documents and applications**...no matter where you are in the office. You also get the controlled access and tracking ability you require with tighter integration capabilities for network security and accounting applications.



ADVANCED DEVICE MANAGEMENT TOOLS MAXIMIZE EFFICIENCY



Sharp Remote Device Manager.

The MX-2610N/3110N/3610N color series document systems enhance operational efficiency through versatile device management capabilities.

Sharp Remote Device Manager (SRDM)

Make management of your MX-2610N/3110N/3610N simple and straight forward with Sharp Remote Device Manager (SRDM). This easy-to-use software allows you to take control of the versatile system features and simplifies installation and management.

- With **Printer Status Monitor**, network users can view printer conditions, check paper levels, toner, and more, all through an easy-to-use interface.
- With advanced Sharp Remote Device Manager, administrators can easily manage the setup, configuration, device settings, cloning and more! Advanced features such as **Remote Front Panel** allow administrators and support personnel to view and control the LCD panel of the machine remotely from virtually any PC on the network! Plus, with event-driven, real-time service alerts, administrators and supervisors can achieve higher productivity. Now it is easier than ever to view service logs, click counts, history reports and more.
- Experience the convenience of an **Embedded Web Page** right from your desktop! This advanced web-based management tool allows users to create and manage their own network scanning destinations, profiles and web-links. Administrators can access device settings, color control, account information and security settings.



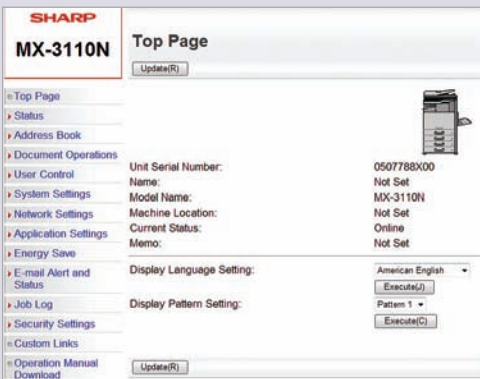
Remote Front Panel.

Take Charge of Color Usage and Costs

With Sharp's device management system, administrators and supervisors can **define user groups** on the MX-2610N/3110N/3610N to manage and restrict features, such as color copying, scanning or printing. Easily set up a custom user group to manage page counts (copy, print, scan or fax operations) for both color and B&W. This helps to simplify cost management of color imaging. The MX-2610N/3110N/3610N can store profiles for up to 1000 users.

24/7 Training with My Sharp

Managing all of the advanced features of your Sharp product is simple and easy. Ask your Authorized Sharp Dealer about the **My Sharp** website. This dedicated customer training website is customized to your MX-2610N/3110N/3610N and allows you to locate resources and find information specific to your configuration, truly helping you maximize your investment.



Embedded Web Page.



*Some features require optional equipment.

PRIVACY

AUTHORIZATION

CONFIDENTIALITY

PROTECTION



Sharp's Standard Key Security Features at a Glance

- 256 Bit Data Encryption
- Up to 7 times Data Overwrite Protection
- Group Account Management for up to 1000 Users
- Confidential Printing
- Port Management
- IP/MAC Address Filtering

Innovative document and device protection helps ensure confidentiality.

To help protect your data, the MX-2610N/3110N/3610N offers several layers of **standard security**, making Sharp the optimum choice to help protect employees' privacy and intellectual property. As a leader in office equipment security, Sharp makes it easy for virtually any business or government entity to safely deploy digital copying, printing, scanning and faxing.



Authority Groups

Advanced **account management** enables administrators to set authority groups for access to features of the MX-2610N/3110N/3610N. Administrators can control which department, for instance, has full access to copying, printing, scanning and/or fax. Walk-up users enter a code, Local Name and Password, or LDAP User Authentication to access the features assigned to their group.



Data Encryption and Overwrite

To help protect your data, the MX-2610N/3110N/3610N can encrypt document data using AES (Advanced Encryption Standard) **256-bit encryption**. The MX-2610N/3110N/3610N can also erase the temporary memory on the hard drive by overwriting the encrypted data up to seven times, offering an unprecedented level of assurance. A convenient **end-of-lease feature** overwrites all data, including document filing area, user data, job status data and address book.



Network Scanning Access Control

To help protect your network from unauthorized e-mail communications, the MX-2610N/3110N/3610N supports **User Authentication**, requiring users to login before performing any network scanning operations.



Control Device Access Over the Network

To help restrict access to the device over the network, the MX-2610N/3110N/3610N offers IPsec, SMB and extended support for **SSL Encryption** (Secure Sockets Layer), **IP/MAC** address filtering, IEEE 802.1x authentication, protocol enable/disable and port management for maximum security.



Documents Remain Confidential

The MX-2610N/3110N/3610N offers **Confidential Printing**, which when used, requires users to enter a PIN code in order to print a queued document. To help protect your direct-print documents from unauthorized viewing, the MX-2610N/3110N/3610N offers encrypted PDF printing and scanning. Additionally, **Secure Fax Release** ensures received fax documents are held in memory until an authorized user enters a PIN code, so that compliance with healthcare regulations such as HIPAA is easier.



Tracking and Auditing Information

Legislation and industry policies require companies to be more aware of information flow from their offices. Sharp offers both built-in and additional hardware/software which allows users to control, access and track usage of each device on the network.



Data Security Kit (Optional)

For maximum protection, the optional data security kit offers additional features, such as **Data Overwrite on-demand** and at Power Up, Document Filing access control and Restricted Status Display and Restricted List printing.

These scalable security offerings aim to protect your intellectual property, preserve confidential information and help your business to meet regulatory requirements, such as the Health Insurance Portability and Accountability Act (HIPAA), and the Gramm Leach Bliley Act (GLB). For additional information visit: www.sharppusa.com/security.

ENVIRONMENTALLY RESPONSIBLE, ECOLOGICALLY FRIENDLY



Sharp's ongoing commitment and dedication to developing eco-friendly document systems set a high standard for the industry.

Designed with a Strong Commitment to Helping Protect the Environment

The MX-2610N/3110N/3610N document system utilizes Sharp's enhanced second generation micro-fine toner technology, which offers a lower consumption rate than conventional toners. This also results in less packaging material and longer replacement intervals. Additionally, all Sharp supplies are packaged using fully recyclable materials. Power consumption on the MX-2610N/3110N/3610N is among the lowest in the industry and supports two different energy saving modes to reduce or shut off power after a set interval. All Sharp document systems belong to the EnergyStar® program and RoHS program.

An Economical, Low Maintenance Color Document System that Makes Sense

The MX-2610N/3110N/3610N is designed to accommodate both large and small office environments. With a compact wingless design, the dimension of each base model is less than 25" x 28". Our new long-life consumable parts and supplies help minimize service intervals and down time, resulting in lower operating costs.

Sharp's Environmental Leadership

As a testament to our commitment to the environment, Sharp was a former recipient of the *Excellence in Partnership Green Contractor Award* and the *Evergreen Award* from the US Government's General Services Administration and the Coalition for Government Procurement. The Green Contractor Award recognizes contractors that have made the best overall commitment to the environment by offering environmentally-friendly products and services or adhering to environmentally sound manufacturing procedures. The Evergreen Award identifies environmentally-friendly businesses and their efforts in recycling and waste reduction practices. Please visit www.sharpusa.com/environment to learn more about our environmental leadership.

Toner Recycling Program

As part of our commitment to helping preserve the environment, Sharp offers customers a toner recycling program for all Sharp copiers and MFP products. Sharp encourages customers to recycle their used Sharp toner cartridges by providing a pre-paid shipping label for their return to our facility. Please visit www.sharpusa.com/recycle to learn more.

MX-2610N/MX-3110N/MX-3610N SPECIFICATIONS

Main Specifications

MX-2610N/3110N/3610N	Base models include multi-tasking controller, high-resolution touch screen display, 100-sheet RSPF, 160 GB Hard Disk Drive with document filing, PCL6/5c network printing/scanning, duplexing, 500-sheet paper drawer, 100-sheet Bypass Tray. Developer is included.		
Type	Desktop, color multi-function digital document system		
Display	10.1" (diagonally measured) color dot matrix touch panel tilting display, 1024 x 600 dots (W-SVGA)		
Functions	Copy, print, network print, network scan, document filing and fax ¹		
Copy System	Dry electrostatic transfer/Dual component developer/Magnetic brush development/OPC drums/Belt type fusing/white LED exposure		
Originals	Sheets and bound documents		
Max Original Size	11" x 17"		
Copy Size	Min. 5/8" x 8 1/2", Max. 11" x 17" + 12" x 18"		
Copy Speed	26/31/36 ppm B&W/Color (8 1/2" x 11")		
Multiple Copy	Max. 999 copies		
First Copy Time (Seconds)²			
	MX-2610N	MX-3110N	MX-3610N
	Black Color	Black Color	Black Color
	Platen Glass 5.9 8.1	5.8 7.9	5.2 6.8
	Doc. Feeder 9.1 11.6	9.1 11.6	8.1 10.6
Warm Up Time	20 seconds or less ³		
Magnification	25% to 400% in 1% increments (with document feeder 25%-200%)		
Original Feed	100-sheet RSPF with original size detection		
Scan Speed	Copy mode: Up to 50 OPM (B&W) @ 600 x 400 dpi; Up to 36 OPM (Color) @ 600 x 600 dpi. ²		
	Network Scan: Up to 50 OPM (B&W or Color) 200 x 200 dpi. ²		
Original Sizes	5 1/2" x 8 1/2", 8 1/2" x 11", 8 1/2" x 11" R, 8 1/2" x 14", 11" x 17" (13-32 lb. bond)		
Paper Feed System	Standard: (1) 500-sheet paper drawer (letter/legal/ledger/statement size) and 100-sheet bypass tray (letter/legal/ledger/statement/envelope size). Optional: Single, double or triple drawer paper deck (500-sheets each drawer), letter/legal/ledger/statement size.		
Paper Types	Paper drawers: 16 lb. bond -110 lb. index. Other paper types include plain, pre-printed, recycled, pre-punched, letterhead and color paper. Bypass Tray: 16-28 lb. bond (plain paper), 13-16 lb. bond (thin paper), 110-140 lb. index (heavy paper), 20-24 lb. bond (Monarch/Com-10 envelope), tab paper (letter). Also label paper, gloss paper, pre-printed, recycled, pre-punched, letterhead, color paper and OHP film.		
Duplexing	Standard automatic duplex copying and printing		
CPU	Up to 1250 MHz Multi-Processor Design		
Interface	RJ-45 Ethernet (10/100/1000Base-T), USB 2.0 (2 host ports, front and rear), USB 2.0 (1 device port, rear)		
Memory	Standard 2 GB Copy/Scan; 1 GB Printer Memory		
Hard Disk Drive	160 GB; 86 GB for document filing		
Copy Resolution	Scan: B&W/color: 600 x 600 dpi; Copy Output: B&W/color: 600 x 600 dpi		
Color Modes	Auto Color Control (ACC), Full Color Mode, Monochrome (B&W)		
Exposure	Modes: Automatic Text, Text/Photo, Text/Printed-Photo, Printed-Photo, Photo, Map, Pale-Color Document. Settings: Auto or 9 step manual		
Control	256 gradations/2 levels (monochrome)		
Copy Features	Scan-Once Print-Many, electronic sorting, offset-stacking, Auto Color Sensing (ACS), Auto Paper Sensing (APS), Auto Magnification Sensing (AMS), image preview, image edit, auto tray switching, rotation copy, reserve copy, tandem copy, book copy, margin shift, tab-paper insertion, edge erase, center erase, book divide, dual page copy, cover pages, insert pages, OHP insertion, job build, card shot, blank page skip, mirror image, black-white reversal, centering, proof copy, 2-in-1/4-in-1/8-in-1, pamphlet, watermark custom image, job programs, date/character/page stamp.		
Account Control	Up to 1000 users. Supports user-number authentication (on device), login name/password (on device) or login name/password (on device via LDAP server) for Copy, Print, Scan, Fax and document management.		
Output Tray Capacity	Main output tray (top) 400 sheets (face down); optional eject tray (right 1 side) 100 sheets (face down)		
Firmware Management	Flash ROM with local (USB), network update capability and firmware update 1 to N with SRDM (Sharp Remote Device Management)		
Configuration Method	Web-based management with user/administrator level login, cloning (1 to N) with SRDM and remote front panel access		
Service/Functions	Remote front panel, remote access to service logs and click counts		
Accessibility Features	Tilt Front Panel, Adjustment of Key Touch-Send and Speed, Concave Key, Document Feeder Free Stop, Job Programs, Remote Front Panel, Universal Grip for Paper Trays, and Disable Screen Timeout		
Environmental Standards	International Energy Star Program Ver. 1.1, Law on Promoting Green Purchasing, European RoHS (Restriction of Hazardous Substances)		
Power	AC 100-127 VAC, 60 Hz, 12 Amps		
Power Consumption	Maximum: 1440 W or less		
Weight	MX-2610N/3110N: Approx. 161 lbs./MX-3610N: 167 lbs.		
Approx. Dimensions	24 3/4" (w) x 27 1/2" (d) x 33" (h)		

Network Printing System

PDL	Standard PCL® 6/PCL5c compatible, optional Postscript 3, optional XPS
Resolution	1200 x 1200 dpi
Print Speed	26/31/36 pages per minute (8 1/2" x 11")
Print Drivers	Windows 2000, Windows Server® 2003-2008, Windows XP, Windows XP x64, Windows Server x64, Windows Vista®, Windows Vista® x64, Windows 7, MAC OS®, 9.2.2, OSX (including 10.2.8, 10.3.9, 10.4.11, 10.5-10.8, 10.6-10.6.1), all MAC PPD.
Features	Auto configuration, continuous printing, electronic sorting, offset stacking, N-up printing, duplex printing, transparency inserts, margin shift, image rotation, different cover page, poster print, job bypass print, job retention, confidential print, proof print, user authentication, image stamp and watermarks. Additional features: Multiple pamphlet, network tandem print, carbon copy print mode, different cover page/last page/other page, form overlay, tab paper settings, tab printing, chapter inserts, page Interleave and bar code font printing ¹
Direct Printing	File Types: TIFF, JPEG, PCL, PRN, TXT, PDF, Encrypted PDF, (optional) Postscript and XPS ² Methods: FTP, Web page, E-mail and USB memory
Resident Fonts	80 outline fonts (PCL), 136 fonts (PS)
Interface	RJ-45 Ethernet 10/100/1000 Base-T, USB 2.0
Operating Systems	Windows Server 2003-2008, Windows 2000/XP, Windows Vista, Windows 7, MAC OS 9-9.2.2, MAC OS X 10.2.8, 10.3.9, 10.4.11, 10.5-10.8, 10.6-10.6.5, Novell® Netware® 3x, 4x, 5x, Sun® OS 4.1x, Solaris® 2x, Unix®, Linux® and Citrix® (Metaframe, Presentation Server 4, 4.5) and Windows Terminal Services. ¹
Network Protocols	TCP/IP (IPv4, IPv6, IPSEC) SSL (HTTP, IPP, FTP), SNMPv3, SMTP, POP3, LDAP, 802.1x for Windows and Unix, LPD and LPR for Unix. IPX/SPX® for Novell environments. EtherTalk® and NetBEUI. AppleTalk® for Macintosh® environments. ¹
Printing Protocols	LPR, IPP, IPPS, PAP, Raw TCP (port 9100), FTP and Novell PServer/Printer
Network Security	IP/MAC address filtering, protocol filtering, port management, user authentication and document administration. ¹
Security Standards	IEEE-2600™-2008, DoD (NSTISSP) #11, DoD Directive 8500.2, DoD (DISA) ¹

Network Scanning System

Scan Modes	Standard: Color, monochrome, grayscale
Max Original Size	11" x 17"
Optical Resolution	600 dpi
Output Modes	600 dpi, 400 dpi, 300 dpi, 200 dpi, 150 dpi, 100 dpi
Image Formats	Monochrome: TIFF, PDF, Encrypted PDF, XPS Color: Grayscale, Color TIFF, JPEG, PDF, Encrypted PDF, XPS Internet Fax: TIFF-FX, TIFF-C, TIFF-F, TIFF-S ¹
Image Compression	Monochrome Scanning: Uncompressed, G3 (MH), G4 (MR/MMR) Color/Grayscale: JPEG (high, middle, low) Internet Fax mode: MH/MMR (option)
Scan Destinations	E-mail, Desktop, FTP, Folder (SMB), USB, Internet fax (option), Super G3 fax (option)
One-touch Destinations	Up to 2000 (combined scan destinations)
Group Destinations	Up to 500
Programs	48 (combined)
Max. Jobs	Up to 100
Network Protocols	TCP/IP and SSL (includes HTTP, SMTP, LDAP, FTP, POP3), SMB, ESMTP and 802.1x.
Network Security Software	E-mail server user authentication for LDAP and Active Directory Sharpdesk® desktop document management software (1 user license)

B&W Super G3 Fax Kit (option)

Transmission Mode	Super G3, G3
Modem Speed	33.6 KBPS ³
Compression Methods	JBIG, MMR, MR, MH
Scanning Method	Sheet fed simplex or duplex or book
Max. Resolution	400 dpi
Transmit Speed	Approx. 2 seconds with Super G3/JBIG ⁴
Auto Dialing	Up to 2000 (combined scan destinations)
Group Dial	Up to 500 destinations
Inbound Fax	Routing: Forwards received fax data to E-mail
Long Length	Up to 31 1/2" (for transmission)
Originals Programs	48 (combined)
Memory	Shared
HalfTone	256 levels

Saddle Stitch Finisher (option)

Type	Console finisher with dual exit trays (mounts on left side of host machine)
Output Trays	Upper tray: Offset stack tray Lower tray: Book tray for saddle stitch
Output Capacity	1000 sheets (letter/statement size) or 500 sheets (legal, ledger or letter-R size)
Stapling	Up to 50 sheets (letter/statement) or 25 sheets (legal, ledger or mixed)
Output Delivery	Face down
Stapling Media	Plain paper, letter/legal/ledger size or mixed
Stapling Positions	1 front, 1 rear, or both
Saddle Stitch Function	Center stitch/center folding (2 staples) letter/legal/ledger paper sizes
Saddle Stitch Max. Sets	Up to 10 sets (11-15 sheets per set)/15 sets (6-10 sheets per set)/20 sets (1-5 sheets per set)
Power	70 W or less
Consumption	
Hole Punching	Optional hole punch unit MX-PNX5B (2 holes/3 holes)
Weight	Approx: 88.18 lbs.
Dimensions	26" (w) x 25" (d) x 39" (h) (with tray extended)

Inner Finisher (option)

Type	Built-in finisher (hole-punch unit option)
Output Capacity	500 sheets (letter/statement) or 250 sheets (ledger/legal size)
Output Delivery	Face down
Stapling Media	Plain paper (letter, legal, or ledger size)
Stapling Positions	1 front, 1 rear, or both
Power Source	Supplied from main unit
Stapling	Up to 50 sheets (letter size) or 30 sheets (legal, ledger or mixed)
Stapled Sets	30 bundles or 500 sheets (letter or statement size) or 30 bundles or 250 sheets (legal or ledger size)
Hole Punching	Optional hole punch unit MX-PN11B (2 holes/3 holes)
Weight	Approx. 26.5 lbs.
Dimensions	24 3/4" (w) x 23 1/2" (d) x 8" (h) (includes extended tray)

Optional Equipment

MX-DE12	Stand/1 x 500 Sheet Paper Drawer
MX-DE13	Stand/2 x 500 Sheet Paper Drawer
MX-DE14	Stand/3 x 500 Sheet Paper Drawer
MX-36ABD	Rolling Cabinet Base
MX-LC11	Large Capacity Tray
MX-FN17	Inner Finisher
MX-PN11B	3 Hole Punch Unit (Requires MX-FN17)
MX-SCX1	Staple Cartridge (MX-FN17)
MX-FN10	Saddle Stitch Finisher
MX-RB10	Paper Pass Unit (Required for MX-FN10)
MX-PNX5B	3 Hole Punch Unit (MX-FN10)
AR-SC3	Staple Cartridge (MX-FN10)
MX-TR12	Right-side Exit Tray Unit (MX-2610N/3110N)
MX-TR13	Right-side Exit Tray Unit (MX-3610N)
MX-TU12	Center Exit Tray Unit
MX-PK11	PostScript® 3™ Kit
MX-PUX1	XPS Expansion Kit (Requires MX-SHP1GBCR3)
MX-SHP1GBCR3	1GB Memory Upgrade (Required for MX-PUX1)
MX-FX11	Fax Expansion Kit
MX-FWX1	Internet Fax Kit
MX-PF10	Bar Code Font Kit
AR-SU1	Stamp Unit (Requires AR-SV1 Stamp Cartridge)
AR-SV1	Stamp Cartridge
MX-KB11	Keyboard (Standard on the MX-3110N/3610N)
MX-EB11	Enhanced Compression Kit
MX-EB12	Mirror Expansion Kit
MX-AMX1	Application Integration Module
MX-AMX2	Application Communication Module
MX-AMX3	External Accounting Module
MX-FR30U	Commercial Data Security Kit
MX-EC50	CAC Reader (Requires Data Security Kit)
DVENDFS	Generic Vendor Interface Kit

Supplies

MX-36NTBA	Black Toner Cartridge
MX-36NTCA	Cyan Toner Cartridge
MX-36NTMA	Magenta Toner Cartridge
MX-36NTYA	Yellow Toner Cartridge
MX-36NVBA	Black Developer
MX-36NVSA	Cyan/Magenta/Yellow Developer
MX-36NRSA	Drum

¹ Some features require optional equipment. See your local dealer.

² May vary depending on product configuration, machine settings and operating and/or environmental conditions.

³ Actual transmission time will vary based on line conditions.

⁴ Based on Sharp Standard Test Chart with approximately 700 characters, letter size in standard resolution.



SHARP ELECTRONICS CORPORATION
Sharp Plaza, Mahwah, NJ 07495-1163
1-800-BE-SHARP • www.sharpsusa.com

Design and specifications subject to change without notice. Sharp, Sharp OSA, Sharpdesk, My Sharp, and all related trademarks are trademarks or registered trademarks of Sharp Corporation and/or its affiliated companies. Windows, Windows NT, Windows Server and Windows Vista are trademarks or registered trademarks of Microsoft Corporation. All other trademarks are the property of their respective owners.