

SHARP®



HIGH PERFORMANCE, LOW OPERATING COSTS, POWERFUL RESULTS



"Most Secure MFP Range"
Award 2009



"Best Device Management
and Integration Technology for
MFP Series" Award 2009

 **MX-C400P**
 **MX-B400P**

WORKGROUP LASER PRINTERS

MX-C400P/MX-B400P

Powerful Frontier laser printers expand workgroup capabilities, reduce operating costs.

powerful



4.3" Color Navigation Panel makes operation simple with an informative graphical user interface.



Adaptable smart design for convenient setup.

Help improve your organization's productivity, efficiency, and bottom line with the Sharp MX-C400P and MX-B400P workgroup laser printers. Offered in both full color and monochrome versions, these new additions to the Sharp Frontier product line provide high performance and professional quality output combined with low cost-per-print operation to help control day-to-day expenses. Built with the same dynamic architecture as Sharp's line of award-winning Frontier MFPs—and sharing common options and supplies with these products—the MX-C400P and MX-B400P will integrate easily into your existing workgroup configuration. The MX-C400P delivers rich, vibrant color prints, while the MX-B400P produces crisp black and white output—all at an impressive speed of 40 pages per minute. A high-resolution, color LCD Screen with graphical user interface simplifies operations. With the latest Sharp OSA[®] development platform, integration with network software applications has never been easier. And to safeguard the confidentiality of your intellectual property, Sharp's industry-leading security suite is second to none.

PRODUCTIVITY IN ACTION TO SPEED OUTPUT

Advanced features help maximize efficiency, enhance productivity and streamline document workflow.



versatile

- Professional quality printing at a speed of **40 pages per minute** produces documents quickly and accurately in vivid color (MX-C400P) and in crisp black and white (MX-B400P).
- Powerful 1 GHz (MX-C400P) and 800 MHz (MX-B400P) processors help **enhance performance** and increase productivity in busy work environments.
- High-resolution, color navigation panel with **informative graphical user interface** makes advanced printing functions easy to use.
- The **optional space-efficient Inner Finisher** not only provides exceptional productivity, but also automates time-consuming tasks such as stapling, sorting, and offset stacking.
- State-of-the-art Frontier laser printers integrate into existing IT infrastructures with full support of both Windows® and Mac®, as well as other systems such as Linux® and AS400, for **seamless operation**.
- **Convenient Direct Printing** functionality—direct USB memory, network folder, FTP server, printer's Hard Disk Drive, embedded Web Page, and E-mail printing—provides a whole new level of accessibility. Print all of the following file types, without needing to use a print driver: PDF, Encrypted PDF, JPEG, TIFF, PostScript®, XPS, TXT, PCL, and PRN.*
- Sharp's easy-to-use **Document Filing System** provides a high-capacity 80 GB of hard drive space for fast document storage and retrieval.
- The cutting-edge Sharp **Remote Front Panel** feature allows administrators and help desk professionals to access and control the device from a remote PC workstation.
- Third-generation **Sharp OSA** development platform enables users to access network applications directly from the device's display panel, helping to control access and enhance usage.
- Sharp's latest **award-winning** document and network security suite safeguards the confidentiality of your intellectual property through user authentication and more.
- **Environmentally-friendly** design offers low power consumption and long-life parts, supported by Sharp's toner recycling program.

**Some features may require optional equipment.*



Front Panel USB 2.0 Port allows easy access for quick walk-up printing.



"Best Development Platform
Sharp OSA Technology"
Award 2009



"Outstanding
Achievement for
Innovation" Award 2008

CUTTING-EDGE DESIGN TO HELP SAVE TIME AND MONEY

Innovative Sharp OSA® Technology provides the tools you need for seamless application integration.



Sharp OSA® technology at a glance

- Automate tasks and save time with seamless integration between the MX-C400P/B400P and network applications
- Virtually eliminates repetitive tasks and streamlines workflow, increasing efficiency
- Maximize your return on investment with tighter integration among IT assets
- Industry standard programming leads to faster deployment of new solutions



Sophisticated hybrid design for versatile setup in countertop or floor-standing console configurations, expandable to a 4-tray console with inner finisher stapling and offset stacking capabilities.

Versatile Application Integration

The MX-C400P and MX-B400P workgroup laser printers provide powerful functionality for your business so you can immediately leverage your previous investments in print management infrastructure. While others are limited to a small circle of productivity, Sharp's newest innovation, the Sharp OSA development platform, allows users to tap into the power of their back-end systems right from the control panel. It's really a new way of thinking with "power at the panel" for automation of tasks and a streamlined workflow.

Save Time, Increase Efficiency

You'll save time and increase the efficiency of everyday tasks with Sharp OSA technology because it can be virtually seamless to the user. Any Frontier laser printer anywhere in the organization can display choices that were once only available on a desktop PC. With direct access to business applications via Sharp OSA integration, you can start and finish a document output task right from the device control panel.

Complement Your Infrastructure

The Sharp OSA development platform is the logical choice as a complement to your existing infrastructure. With the **standard application communication and external accounting modules**, the new MX-C400P and MX-B400P become gateways to providing fast, flexible access to documents and applications... no matter where you are in the office. You can get the controlled access and tracking ability you require with tighter integration capabilities for network security and accounting applications. With such comprehensive control, you'll be able to manage your document workflow easily, efficiently, and more securely.

Customized Technology

Sharp OSA technology also provides customization. With the ability to personalize applications and processes specific to your business, Sharp OSA technology can help eliminate redundancy and streamline workflow, helping to save time and optimize productivity. And since Sharp OSA technology utilizes industry-standard network protocols such as SOAP, XML, and XHTML, third party software developers can deliver customized solutions to your business faster than ever.



"Best Device Management and Integration Technology for MFP Series" Award 2009

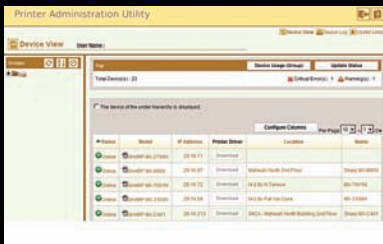


"2009 BLI Pick of the Year for Outstanding Network Device Management Utility"

ADVANCED DEVICE MANAGEMENT BOOSTS FUNCTIONALITY

Precisely engineered, robust design enables you to take control of cost and manage your workgroup's usage.

administer



Printer Administration Utility



Remote Front Panel



Embedded Web Page

The Sharp Administration Utility Suite

Sharp's Administration Utility Suite takes management of your MX-C400P and MX-B400P to the next level. This easy-to-use software allows you to take control of the versatile system features and simplifies installation and management.

- With Sharp's advanced **Printer Administration Utility**, administrators can easily manage the setup, configuration, and device settings of any Sharp printer or MFP! New advanced features such as the **Remote Front Panel** allow administrators and support personnel to view and control the LCD panel of the machine remotely from any PC on the network! Plus with event-driven, real-time service alerts, administrators and supervisors can achieve higher productivity. Now it is easier than ever to view service logs, click counts, history reports, and more.
- Experience the convenience of an **Embedded Web Page** right from your desktop! This advanced web-based management tool allows users to create and manage their own network settings, profiles, and web-links. Administrators can access device settings, color control, account information, and security settings.
- With **Printer Status Monitor**, network users can view printer conditions, check paper and toner levels, and more—all through an easy-to-use interface.

Take Charge of Usage and Costs

With Sharp's **device management system**, administrators and supervisors can define user groups on the Frontier laser printers to manage and restrict printing features. Easily set up a custom user group to manage page counts. The MX-C400P and MX-B400P can store **profiles for up to 1,000 users**.

24/7 Training with My Sharp

Managing all of the advanced features of your Sharp product is simple and easy. Ask your Authorized Sharp Dealer about **My Sharp**. This dedicated customer training website is customized to your Frontier printers and allows you to locate resources and find information specific to your configuration, truly helping you maximize your investment.





"Most Secure MFP Range"
2009 Award
6th Consecutive Year

HEIGHTENED SECURITY ENSURES CONFIDENTIALITY

Sharp's industry-leading document and device protection ensures confidentiality and safeguards your assets.

secure

DATA SECURITY

Protect Your Data

The new MX-C400P and MX-B400P offer several layers of security, making Sharp the optimum choice to protect employee privacy and intellectual property. As the leader in office equipment security, Sharp makes it easy for any business or government entity to safely deploy and facilitate secure printed documents.



Functional floor-standing console, complete with finisher for professional finishing options.

Authority Groups and Access Control

Advanced account management enables administrators to set authority groups for access to features of the new Frontier workgroup laser printers. Administrators can control which department, for instance, has full printing access. Walk up users enter a code, Local Name and Password, or LDAP User Authentication to access the features assigned to their group. Users can also login utilizing a USB enabled card reader for magnetic stripe cards or proximity cards.*

Data Erase and Encryption*

To help protect your data, the new MX-C400P and MX-B400P offer an optional data security kit that encrypts document data using **AES (Advanced Encryption Standard) encryption**. The data security kit erases the temporary memory on the hard drive by overwriting the encrypted data up to seven times, offering an unprecedented level of assurance. Additionally, the data security kits for these models comply to the new IEEE 2600™-2008 security standard for hardcopy devices. This new standard specifies security requirements and provides a new international reference to assess contemporary MFP security.

Control Device Access Over the Network

To help restrict access to the device over the network, the new MX-C400P and MX-B400P offer IPsec, SMB and extended support for **SSL Encryption (Secure Sockets Layer)**, **IP/MAC address filtering**, IEEE 802.1x authentication, protocol enable/disable and port management for maximum security.

Documents Remain Confidential

To help protect your printed documents from unauthorized viewing, the new MX-C400P and MX-B400P offer encrypted PDF files for printing, as well as **Confidential Printing** that requires users to authenticate to the device in order to print a queued document. So compliance with security standards and industry regulations is easier.

Tracking and Auditing Information

Legislation and industry policies require companies to be more aware of information flow from their offices. Sharp offers both built-in and additional hardware/software which allows users to control, access, and track usage of each device on the network.

These scalable security offerings aim to protect your intellectual property, preserve confidential information and help your business to meet regulatory requirements, such as the Health Insurance Portability and Accountability Act (HIPAA), and the Gramm Leach Bliley Act (GLB). For additional information visit: www.sharppusa.com/security.

*Some features may require optional equipment.

ENVIRONMENTAL CONSERVATION

Commitment, dedication and passion drive Sharp to develop eco-friendly, energy saving systems.

preserve



Sharp's commitment to the environment sets a high standard for the industry.

Designed with a Strong Commitment to Protecting the Environment

The new Frontier workgroup laser printers utilize Sharp's second generation micro-fine toner technology, which offers a lower consumption rate than conventional toners. This also results in less packaging material and longer replacement intervals. Additionally, all Sharp supplies are packaged using fully recyclable materials. Power consumption on the new MX-C400P and MX-B400P is among the lowest in the industry and supports two different energy saving modes to reduce or shut off power after a set interval. All Sharp document systems belong to the RoHS program.

An Economical, Low Maintenance Document System That Makes Sense

The MX-C400P and MX-B400P are designed to accommodate both large and small office environments. With a compact wingless design, the footprint of each base model is less than 25" x 27". Our new long-life consumable parts and supplies minimize service intervals and down time, resulting in lower operating costs.

Sharp's Environmental Leadership

Reinforcing our commitment to the environment, in 2007 Sharp received the *Excellence in Partnership Green Contractor Award* and the *Evergreen Award* from the U.S. Government's General Services Administration and the Coalition for Government Procurement.

The Green Contractor Award recognizes contractors that have made the best overall commitment to the environment by offering environmentally friendly products and services or adhering to environmentally sound manufacturing procedures. The Evergreen Award identifies environmentally-friendly businesses and their efforts in recycling and waste reduction practices. Please visit www.sharpusa.com/environment to learn more about our environmental leadership.

Toner Recycling Program

As part of our commitment to preserving the environment, Sharp offers customers a toner recycling program for all Sharp printers and MFP products. Sharp encourages customers to recycle their used Sharp toner cartridges by providing a pre-paid shipping label for their return to our facility. Please visit www.sharpusa.com/recycle to learn more.



Quick Replace Cartridges for Easy Maintenance

This design makes service and general maintenance easier without the need to disassemble the entire machine and of course, Sharp toner cartridges and packaging are fully recyclable.

MX-C400P/MX-B400P SPECIFICATIONS

Main Specifications

MX-C400P/ MX-B400P	Includes high-performance controller, 80 GB HDD, PCL 6/PostScript® 3 network printing, auto-duplex, 500-sheet paper drawer and 100-sheet bypass. Black (MX-C400P/MX-B400P) and color (MX-C400P) developer is included in the box.
Type (MX-C400P) (MX-B400P)	Digital Full Color Workgroup Laser Printer Digital Monochrome Workgroup Laser Printer
Display	4.3 inch color LCD
Print System	Electrophotographic system (laser)/Dry-type dual component developer/Magnetic brush development/OPC drums/Heat roller fusing
Printing gradation	Equivalent to 256 levels
Print area	Entire page excluding margin of 1/64" at each edge ¹
Print Size	Min 5 1/2" x 8 1/2", Max 8 1/2" x 14"
Print ratio	100%/Reduced/Enlarged
Print Speed	MX-C400P: 40 ppm B&W/Color (Letter) MX-B400P: 40 ppm B&W (Letter)
First Print Time	Color print time: 8.9 seconds or less ² Black and white print time: 8.0 seconds or less ²
Warm-Up Time	90 seconds or less ²
CPU	MX-C400P: Power QUICCIII-MPC8533E/1,000MHz MX-B400P: Power QUICCIII-MPC8533E/800MHz
Memory	Standard 1 GB (MX-C400P) and 512 MB (MX-B400P) system memory
Hard Disk Drive	80 GB (38 GB Main Folder)
Account Control	Up to 1000 users. Supports user-number authentication (on device), login name/management, date/character/page stamp (color), Print, and Document Management
Paper Feed System	Standard: 500 sheet paper drawer (Letter/Legal) and 100-sheet bypass tray (Letter/Legal) ³ Optional: Up to 3 additional 500-sheet paper drawers (Letter/Legal) ³
Output Tray Capacity	250 sheets (face down)
Duplexing	Standard automatic duplex printing
Tray full sensor	Yes
Power	AC 100-127VAC, 60HZ, 12 AMPS
Power Consumption	Maximum: 1.44kW or less
Weight	Approx. 97 lbs. (base model)
Dimensions	22 3/4" (W) x 17 1/4" (D) x 24 1/4" (H) 34 1/4" (W) x 17 1/4" (D) x 24 1/4" (H) (when bypass tray is extended)
Media	
Paper sizes	Paper drawers: 8 1/2" x 14", 8 1/2" x 13 1/2", 8 1/2" x 13 3/8", 8 1/2" x 13", 8 1/2" x 11", 7 1/4" x 10 1/2", 5 1/2" x 8 1/2", A4, B5, A5, 16K (Includes automatic paper size detection function.) Bypass tray: 8 1/2" x 14", 8 1/2" x 13 1/2", 8 1/2" x 13 3/8", 8 1/2" x 13", 8 1/2" x 11", 7 1/4" x 10 1/2", 5 1/2" x 8 1/2", envelopes, A4, B5, A5, 16K (Includes automatic paper size detection function.) Paper sizes from 3 15/16" x 5 33/64" (100 mm x 140 mm) to 8 33/64" x 14 1/4" (216 mm x 356 mm) can be entered.)
Paper Types	Paper drawers: 16-28 lb. bond. Other paper types include: plain, pre-printed, recycled, pre-punched, letterhead, and color paper. Bypass Tray: 16-28 lb. bond (plain paper), 15-16 lb. (thin paper), 28 lb. bond-110 lb. index (heavy paper), 20-24 lb. (Monarch/Com-10 envelope). Other types include label paper, pre-printed, recycled, pre-punched, letterhead, color and OHP film.

Network Printing System

PDL	MX-C400P: PCL®5c, PCL6, PostScript 3 compatible, XPS ⁴ ; MX-B400P: PCL®5e, PCL6, PostScript 3 compatible, XPS ⁴
Resolution	1200 dpi, 600 dpi
Print Drivers	CD-ROM: Windows 2000, Windows XP, Windows Server® 2003, Windows Vista®, Windows 7, Windows Server 2008, MAC OS® 9.0-9.2.2, OS-X (including 10.2.8, 10.3.9, 10.4.11, 10.5-10.5.8, 10.6-10.6.1), all MAC PPD Via Download: Windows® 98, Windows ME, Windows NT® 4 (with SP5 or later), Windows XP x64, Windows Server 2003 x64, Windows Vista x64, Windows 7 x64, Windows Server 2008 x64, Windows Server 2008R2, UNIX®, Linux® ⁴
Features	Continuous printing, duplex printing, pamphlet printing, N-up printing, image rotation, different cover page/last page, transparency inserts, margin copy print mode, fit-to-page, poster print, margin shift, mirror image, watermarks, overlay, confidential print, confidential batch print, disable blank page print, print hold, bypass printing, job priority printing, direct printing, data overwrite and encryption (256 bit). ^{4,5}
Direct Printing	Methods: HDD, FTP, SMB, Web Page, E-mail and USB Memory File Types: TIFF, JPEG, PCL, PRN, TXT, PDF, Encrypted PDF, Postscript and XPS ⁴
Resident Fonts	PCL: 80 outline fonts, 28 barcode fonts, 1 bitmap font ⁴ ; PostScript 3 compatible: 136 outline fonts
Connectivity	
Interface	RJ-45 Ethernet (10Base-T/100Base-TX/1000Base-T), USB 2.0 (Host Port), USB 2.0 (Device Port)
Operating Systems	Windows 98, ME, NT4.0, 2000, XP, Server 2003/2008, Vista, 7, MAC OS-9.0, MAC OS-X, Novell® Netware® 3x, 4x, 5x, Sun® OS 4.1x, Solaris® 2x, UNIX, Linux, Citrix® (Metaframe, Presentation Server 4, 4.5) and Windows Terminal Services
Network Protocols	TCP/IP (IPv4, IPv6, IPSEC) SSL (HTTP, IPP, FTP, POP3, LDAP), SNMPv3, 802.1x for Windows and Unix. LPD and LPR for UNIX. IPX/SPX® for Novell environments. EtherTalk® and NetBEUI, AppleTalk for Macintosh® environments.
Printing Protocols	LPR, IPP, IPPS, PAP, Raw TCP (port 9100), FTP and Novell Pserver/Printer
Network Security	IP/Mac address filtering, protocol filtering, port management, user authentication and document administration
Security Standards	IEEE 2600™-2008, DoD (NSTISSP) #11, DoD Directive 8500.2, DoD (DISA)
Firmware Management	Flash ROM with local (USB); network update capability (FTP) and firmware update 1 to N with PAU (Printer Administration Utility); update via Web Page
Configuration Method	Web-based management system with user/administrator level login security, cloning (1 to N) with PAU and remote front panel access
Service/Maintenance	Remote Front Panel Access to service logs and click counts

Connectivity

Interface RJ-45 Ethernet (10Base-T/100Base-TX/1000Base-T), USB 2.0 (Host Port), USB 2.0 (Device Port)

Operating Systems Windows 98, ME, NT4.0, 2000, XP, Server 2003/2008, Vista, 7, MAC OS-9.0, MAC OS-X, Novell® Netware® 3x, 4x, 5x, Sun® OS 4.1x, Solaris® 2x, UNIX, Linux, Citrix® (Metaframe, Presentation Server 4, 4.5) and Windows Terminal Services

Network Protocols TCP/IP (IPv4, IPv6, IPSEC) SSL (HTTP, IPP, FTP, POP3, LDAP), SNMPv3, 802.1x for Windows and Unix. LPD and LPR for UNIX. IPX/SPX® for Novell environments. EtherTalk® and NetBEUI, AppleTalk for Macintosh® environments.

Printing Protocols LPR, IPP, IPPS, PAP, Raw TCP (port 9100), FTP and Novell Pserver/Printer

Network Security IP/Mac address filtering, protocol filtering, port management, user authentication and document administration

Security Standards IEEE 2600™-2008, DoD (NSTISSP) #11, DoD Directive 8500.2, DoD (DISA)

Firmware Management Flash ROM with local (USB); network update capability (FTP) and firmware update 1 to N with PAU (Printer Administration Utility); update via Web Page

Configuration Method Web-based management system with user/administrator level login security, cloning (1 to N) with PAU and remote front panel access

Service/Maintenance Remote Front Panel Access to service logs and click counts

500-Sheet Paper Feed Units (Options)

Dimensions	MX-CSX1 (tray 2): 21 1/16" (W) x 17 1/4" (D) x 4 13/32" (H) MX-CSX2 (tray 3, tray 4): 21 1/16" (W) x 17 1/4" (D) x 4 21/64" (H)
Power supply	Supplied from the machine
Weight	MX-CSX1: Approx. 15.0 lbs. MX-CSX2: Approx. 12.3 lbs.

Inner Finisher (Option)

Type	Built in Finisher
Output Capacity	Up to 280 sheets (Letter/Legal), 20 envelope
Output Delivery	Face down
Modes	Non-sort, offset sort, staple sort
Offset distance	1" (25 mm)
Stapling Media	Plain/Thin/Heavy/Recycled/Letterhead/ Pre-punched/Colored/Preprinted paper
Stapling Positions	Single corner position
Stapling	30 sheets (Letter/Legal)
Stapled Sets	10 bundles or 300 sheets (Letter/Legal)
Power Source	Supplied from the main unit
Weight	Approx. 19.8 lbs.
Dimensions	18 3/4" (W) x 13 1/16" (D) x 6 3/16" (H) When tray is extended: 20 1/2" (W) x 13 1/16" (D) x 6 3/16" (H)

Optional Equipment

MX-FN12P	Inner Finisher (plus Finisher Cover)
MX-CSX1	500 sheet Paper Feed Unit for Tray 2
MX-CSX2	500 sheet Paper Feed Unit for Trays 3 & 4
MX-CFABB	Base Plate with locking casters
MX-CFABD	Deluxe Cabinet with door and locking casters
MX-PUX1	XPS Expansion Kit (Requires MX-SHP1GBXPS)
MX-SHP1GBXPS	Expansion Memory 1 GB (Required for MX-PUX1)
AR-PF1	Bar Code Font Kit
MX-FR20U	Commercial Data Security Kit (MX-C400P) ⁶
MX-FR21U	Commercial Data Security Kit (MX-B400P) ⁶

Supplies MX-C400P:

MX-C40NTB	Black Toner Cartridge
MX-C40NTC	Cyan Toner Cartridge
MX-C40NTM	Magenta Toner Cartridge
MX-C40NTY	Yellow Toner Cartridge
MX-C40NVB	Black Developer
MX-C40NVC	Cyan Developer
MX-C40NVM	Magenta Developer
MX-C40NVY	Yellow Developer
MX-C40NRB	Black Drum Cartridge
MX-C40NRS	Color Drum Cartridge
MX-C31U1	Primary Transfer Belt Unit
MX-C31U2	Secondary Transfer Roller Unit
MX-C31FU1	Fusing Unit (120V)
MX-C31HB	Toner Collection Container
MX-C31RT	Feeding Roller Kit
MX-C31MR	MF Feeding Roller Kit
MX-SCX1	Staple Cartridge (3 cartridges per carton)

Supplies MX-B400P:

MX-B40NT1	Black Toner Cartridge
MX-C40NVB	Black Developer
MX-C40NRB	Black Drum Cartridge
MX-B40U1	Primary Transfer Belt Unit
MX-C31U2	Secondary Transfer Roller Unit
MX-C31FU1	Fusing Unit (120V)
MX-B40HB	Toner Collection Container
MX-C31RT	Feeding Roller Kit
MX-C31MR	MF Feeding Roller Kit
MX-SCX1	Staple Cartridge (3 cartridges per carton)

¹ The actual print area may vary depending on the printer driver and the software application.

² May vary depending on product configuration, machine settings and operating and/or environmental conditions.

³ Paper capacity is based on letter size paper.

⁴ Some features require optional equipment.

⁵ Some features not available on certain print drivers.

⁶ Not available at time of launch.



SHARP ELECTRONICS CORPORATION
Sharp Plaza, Mahwah, NJ 07495-1163
1-800-BE-SHARP • www.sharpusa.com

Design and Specifications subject to change without notice. Sharp, Sharp OSA, My Sharp and all related trademarks are trademarks or registered trademarks of Sharp Corporation and/or its affiliated companies. Windows, Windows NT, Windows Server and Windows Vista are trademarks or registered trademarks of Microsoft Corporation. All other trademarks are the property of their respective owners.