

ColorQube®  
8900  
Letter-size  
Color  
Multifunction Printer



# Xerox® ColorQube® 8900 Multifunction Printer

Workgroup performance  
plus real color savings



# Reduce costs, increase business appeal

The groundbreaking ColorQube 8900 Color Multifunction Printer continues our tradition of Solid Ink innovation. As the first desktop Solid Ink device completely engineered to deliver true multifunction performance, the ColorQube 8900 gives organizations of any size environmentally preferable features, unbeatable ease of use, and consistently exceptional color quality that gets your work noticed. And for more printing-intensive workgroups, the ColorQube 8900 offers the ability to expand into a floor-standing device with extra paper capacity and helpful finishing capabilities.

## ColorQube® 8900 Quick Facts

- Low total cost of ownership
- Print and copy speeds up to 44 ppm
- Powerful scan and fax solutions
- Maximum paper capacity: 3,475 sheets
- Xerox® Workflow Solutions



Print / Copy / Scan / Fax / Email



8.5 x 11 in. / A4



44 ppm color

**WxDxH** (8900X with OCT):  
23.8 x 23.4 x 24.2 in.



## What's the secret to affordable color?

**The answer is as simple as the technology: Xerox® Solid Ink.** Built for high-performance office color printing, our patented Solid Ink technology has a track record of reliability and simplicity. Solid Ink is easy to use, delivers incredible color print quality, produces less printing waste versus comparable color laser devices, and enables you to print low-cost color. It's time to introduce your business to the Solid Ink advantage.





## Great color, great savings

### Impressive color

The ColorQube® 8900 helps your office documents get noticed with vibrant, glossy colors.

- **Make every document stand out.** Count on brilliant, saturated color — print after print — even on inexpensive office or recycled paper.
- **Match your expectations.** PANTONE® calibrated color simulations and Xerox® color correction technology provide easy tools for precisely matching the colors of important business assets, such as your company logo.
- **Flexible print speeds.** Choose the perfect combination of image quality and speed for any printing situation with four different print settings — High Resolution, Enhanced, Standard and Fast Color.

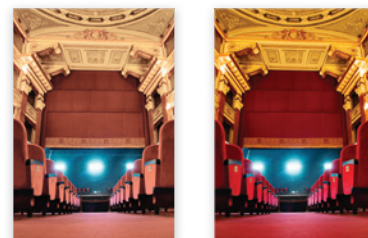
### Print color every day

Now you can afford to add the power of color to everything you print with the ColorQube 8900.

- **The print volume advantage.** If your workgroup prints at least six reams of paper each month, the ColorQube 8900 will deliver unmatched total cost of ownership.
- **Unique price plans deliver big savings.** No more paying expensive color prices for small amounts of color. With the ColorQube 8900, you pay based on the amount of color on the page. On most color pages, your price will drop significantly.

### Color By Words: Intuitive color enhancement

With Color By Words, there is no need to go back to square one and manipulate source files. You can change the color of one object or area without affecting the rest of the page. Simply select the desired color modifications from a drop-down list and your printout is automatically adjusted.



Original photo not right? Use the Color By Words drop-down list and choose “yellow colors a lot more yellow,” and “red colors a lot more red.” Picture-perfect results.

# Enhance your business with advanced ease of use

## A smarter, faster way to work

Experience unparalleled convenience and uptime with Xerox® Solid Ink, which has been designed for maximum ease of use.

- **Fast results.** Get your jobs out as fast as 44 ppm color and black-and-white, with a first-page-out time as fast as 8.5 seconds for color documents. Plus, two-sided printing comes standard — and saves paper.
- **Easy ink loading.** Each ink stick color is uniquely shaped for simple drop-in loading. And ink can be topped off at any time — even if the device is running.
- **Easy expandability.** Experience longer print runs when you increase paper capacity to 3,475 sheets of letter, A4 or legal-size media. Add the 650-sheet finisher and get 50-sheet stapling plus offset stacking.
- **Cartridge-free technology.** Recover valuable office space with minimal storage required for Solid Ink's compact packaging and single replaceable component.
- **Helpful walk-up features.** Embedded help videos provide quick troubleshooting assistance right on the front panel.
- **Ready when you are.** Intelligent Ready technology learns your workgroup's usage patterns so it is ready to print when you are.
- **Reliable operations.** A simple paper path and minimal moving parts keep the ColorQube 8900 up and running in the toughest environments. It can even diagnose potential problems and fix them ahead of time, reducing maintenance and service calls.

## Efficiency in your office

Work faster with features and capabilities that improve the way you create and share office documents.

- **Multitasking operation.** Maximize business efficiency and handle multiple tasks simultaneously with concurrent processing.
- **Advanced scanning built-in.** Easily convert hardcopy documents into digital files that can be shared or archived. On-box OCR creates a text-searchable file for quick information retrieval.
- **Cut down network traffic.** Advanced file compression methods reduce file sizes and network load for faster delivery.
- **Walk-up convenience.** Scan to and print from a standard USB memory device for information at your fingertips.
- **No printing bottlenecks.** The Print Around feature holds a job needing resources, such as a different paper size, and prints the next job in the queue.
- **Powerful fax capabilities.** Send and receive faxes without leaving your desk. LAN fax sends faxes right from applications on your PC using a print driver, and have incoming faxes automatically forwarded to an email address or document repository.

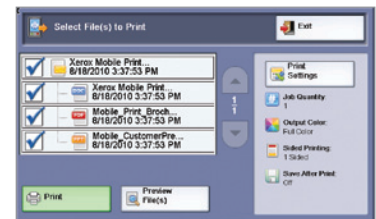
## Xerox® Mobile Print Solution

We're empowering today's mobile professionals with the freedom to send print jobs from any email-enabled device.

**Simple.** There's no software to load on the mobile device, no searching for online printer information, or time wasted looking for the right application. This solution works with any email-enabled device. Plus, there's no dependence on administrative support staff for printing tasks.

**Convenient.** Whether they're traveling or working between offices, users will be able to print MS Office documents, including MS Word, Excel® and PowerPoint®, as well as PDFs.

**Secure.** Mobile workers can print directly from their mobile devices and retrieve documents at a Xerox®-enabled multifunction system with a secure confirmation code. Mobile professionals will no longer have to rely on others to print sensitive documents or risk leaving prints in the output tray.



To print, simply select Mobile Print on the device, enter your confirmation code and select the document and the output settings right at the multifunction system.



Each Solid Ink stick is uniquely shaped to fit the correct slot, making ink loading fast, easy and clean.





## Environmentally conscious design

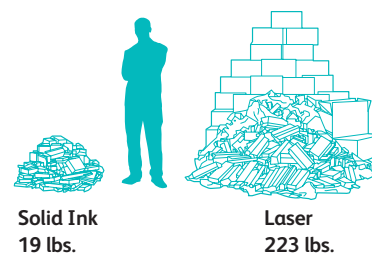
Give your company's sustainability efforts a boost, while enhancing its image with color.

- **Less waste.** Solid Ink sticks avoid the cartridge and the packaging, creating up to 90 % less printing waste versus comparable laser devices.
- **Fewer consumables.** The long-life Cleaning Unit has an average life of 30,000 prints, is the only replaceable component, and can be recycled through the Xerox® Green World Alliance program (visit [xerox.com/gwa](http://xerox.com/gwa) for more information).
- **ENERGY STAR® qualified.** The ColorQube 8900 meets the stringent ENERGY STAR requirements for energy use.
- **Non-toxic and mess-free.** Xerox® Solid Ink is safe to handle and won't leave messy stains when loading into the device.
- **Bio-derived ink.** Xerox® Solid Ink has been certified to have 30 % bio-derived renewable material content by the National Association of Printing Ink Manufacturers (NAPIM).
- **Print responsibly.** Get the same vibrant prints on recycled media. Plus, Earth Smart driver settings allow you to select default settings, such as printing on both sides, that encourage responsible usage.
- **Demonstrated leadership in sustainability.** Xerox's® longstanding focus on environmental sustainability has diverted over two billion pounds of waste from landfills through our Product Take-back and Recycling Program. Xerox® also offers environmentally responsible choices for paper and media allowing you to choose recycled media with up to 100 % post-consumer recycled content and paper that adheres to internationally recognized standards for sustainable forestry management (visit [xerox.com/environment](http://xerox.com/environment) to learn more).

### Solid Ink waste vs. laser waste

**Cartridge-free Solid Ink is a true consumable; no empty toner cartridges to dispose or recycle.**

The ColorQube® 8900 produces 90 percent less waste during use than a comparable laser device.



Total waste produced from printing 4,000 pages per month for 4 years.

# When it comes to IT and security, Xerox® delivers

## Easy on IT

Give your IT department some downtime with a device engineered to be simple to deploy and manage.

- **Reduce calls to IT.** Minimize interventions with innovative features such as simple ink loading, a single long-life replaceable unit and embedded help videos.
- **Simplify driver deployment.** Eliminate the need for IT and mobile workers to download individual print drivers for each product. The Xerox® Global Print Driver® and Mobile Express Driver® are truly universal and let users print to most devices — even those made by other manufacturers.
- **Configure once, deploy fleet wide.** Eliminate the need to configure each device individually. Device configurations can be cloned and distributed to all other ColorQube 8900 devices.
- **Flexible cost control.** Easily assign user permissions for printing based on time of day, job type and applications through an intuitive interface.
- **Manage every device.** IT administrators can easily install, configure, manage, monitor and report on printers and multifunction systems across the network — regardless of manufacturer — using the standard Xerox® CentreWare® Web utility.
- **Easy accurate billing and supplies replenishment.** Automatically collect and submit meter reads with Smart eSolutions MeterAssistant®.

## Cutting edge security

Minimize risk by protecting vulnerable access points and critical business information.

- **Erase sensitive information.** Hard disk overwrite electronically erases image data stored on the ColorQube 8900 hard drive.
- **Keep documents safe.** Ensure your data stays secure with 256-bit encryption using the FIPS 140-2 standard and require a password to open and view a sensitive document by scanning to password-protected PDF.
- **Prevent unauthorized access.** Restrict usage by validating user names and passwords with Network Authentication. Additionally, Xerox® Smart Card Authentication options require card-based identification to protect the device from unauthorized users.
- **End-to-end protection.** Ensure device security with full system Common Criteria (ISO 15408) certification (pending). And with the proactive Xerox® response system, quick updates are provided whenever potential vulnerabilities are identified.

## Extend your possibilities

Transform the way your organization gets vital work done with the power of Xerox® Workflow Solutions. Built on the Xerox® EIP platform, Xerox® Workflow Solutions enable productivity-enhancing utilities via the color touch screen interface. It's about streamlining your workflow and it starts by using Xerox® Workflow Solutions right at your point of need.

Here are just a few of the many solutions that can be integrated with the ColorQube 8900 to make your office more productive:

- Nuance ScanFlowStore™ is an intuitive scanning and storage application that allows the easy creation of digital archives by scanning directly from the ColorQube 8900.
- Xerox® Secure Access Unified ID System integrates the ColorQube 8900 with your authentication system. Users send their documents to a centralized print server, then at any multifunction printer on the network they'll simply log in with a swipe of their magnetic or proximity ID card or their PIN to securely print their job.
- Equitrac Office® enables single sign-on access to devices and services, personal print queues to maximize document security and mobility, and rules to create cost-effective printing behavior.

Learn more about Xerox® Workflow Solutions by visiting [xerox.com/software-solutions](http://xerox.com/software-solutions)



## Complete control at your fingertips.

The state-of-the-art 7-inch color touch-screen interface features bright icons, intuitive menus, and embedded help videos for easy, step-by-step troubleshooting assistance.



- 1** 50-sheet Duplex Automatic Document Feeder accepts custom media sizes from 5.8 x 8.3 in. to 8.5 x 14 in. (148 x 210 mm to 216 x 356 mm).
- 2** 100-sheet Multipurpose Tray handles custom media sizes from 3 x 5 in. to 8.5 x 14 in. (76 x 127 mm to 216 x 356 mm).
- 3** Standard 525-sheet paper tray handles media sizes from 5.8 x 8.3 in. to 8.5 x 14 in. (148 x 210 mm to 216 x 356 mm).
- 4** Choose 2 additional 525-sheet paper trays for media sizes from 5.8 x 8.3 in. to 8.5 x 14 in. (148 x 210 mm to 216 x 356 mm) (optional).

- 5** For high-volume workgroups, add a 1,800-sheet letter/A4-size High-Capacity Feeder (optional).
- 6** Standard Convenience Stapler staples up to 20 sheets of 20 lb. bond/75 gsm media.
- 7** 650-sheet Finisher provides up to 50-sheet stapling and offset stacking (optional).



### ColorQube® 8900 Printer Options

#### ColorQube 8900 Standard Configuration

- 50-sheet Duplex Automatic Document Feeder
- 100-sheet Multipurpose Tray
- 525-sheet paper tray
- 625-sheet total paper capacity
- Convenience Stapler

#### 2 Additional Trays

- Adds two 525-sheet trays
- 1,675-sheet total paper capacity

#### High-Capacity Feeder

- Adds 1,800-sheet capacity
- 3,475-sheet total paper capacity

#### 650-sheet Finisher

- Adds 50-sheet stapling and offset stacking





		<b>ColorQube® 8900X</b>
<b>Speed</b>		Up to 44 ppm color / black-and-white
<b>Duty Cycle</b>		Up to 120,000 pages / month <sup>1</sup>
<b>Paper Handling</b> Paper input	Standard	<b>Platen:</b> Custom sizes: Up to 8.27 x 11.69 in. / A4 <b>Duplex Automatic Document Feeder:</b> 50 sheets; Custom sizes: 5.8 x 8.3 in. to 8.5 x 14 in. / 148 x 210 mm to 216 x 356 mm <b>Multipurpose Tray (MPT):</b> 100 sheets; Custom sizes: 3 x 5 in. to 8.5 x 14 in. / 76 x 127 mm to 216 x 356 mm <b>Tray 2:</b> 525 sheets; Sizes: 5.8 x 8.3 in. to 8.5 x 14 in. / 148 x 210 mm to 216 x 356 mm
	Optional	<b>2 Additional Trays:</b> 525 sheets each; Sizes: 5.8 x 8.3 in. to 8.5 x 14 in. / 148 x 210 mm to 216 x 356 mm <b>High-Capacity Feeder:</b> 1,800 sheets; Sizes: 8.5 x 11 in., 8.5 x 14 in. / A4
Total Capacity (std. / max)		625 / 3,475 sheets
Paper Output (std. / max)		350 sheets / 950 sheets
Finishing	Standard	<b>Convenience Stapler:</b> Up to 20 sheets of 20 lb. bond / 75 gsm
	Optional	<b>650-sheet Finisher:</b> Up to 50-sheet stapling, offset stacking
<b>Print</b>	First-page-out time	As fast as 8.5 seconds color
Print resolution		Up to 2400 FinePoint™
Processor / Memory / Hard drive		1.33 GHz / 1 GB / 80 GB
Page Description Languages		PCL® 5c, PCL 6, Adobe® PostScript® 3™, XPS, TIFF, JPEG, PDF
Connectivity		10/100/1000Base-T Ethernet, USB 2.0, Optional external wireless
Print features		Print Around, Color By Words, Sample Set, Smart duplex, Secure print, Automatic two-sided, Custom page size, print from USB, GreenPrint software, Automatic Color Correction, Custom Color Correction, Spot Color Matching
<b>Copy</b>	First-copy-out time	As fast as 16 seconds color / 16 seconds black-and-white
Copy resolution		Up to 600 x 600 dpi
Copy features		Collation, Reduce/enlarge, Copy to mailbox, Annotation, Automatic background suppression, ID card copy, Book copying, Edge erase, N-up, Mixed-size originals, Build job, Job interrupt, Program ahead, Booklet creation, Bates Stamping
<b>Fax</b>		Embedded Fax <sup>2</sup> , LAN Fax, Internet Fax, Server Fax
<b>Scan</b>	Scan destinations	Scan to Email, Scan to USB, Scan to Folder, Scan to Home, Scan to Mailbox, Scan to Internet Fax
Scan features		Up to 600 x 600 dpi, File formats: JPEG, PDF, Linearized PDF, Searchable PDF, XPS, Searchable XPS, TIFF, Multi-page TIFF
<b>Accounting</b>	Standard	Xerox® Standard Accounting (Copy, Print, Scan, Fax, Email), Additional Network Accounting options from Xerox® Business Innovation Partner Solutions
	Optional	Foreign Device Interface
<b>Security</b>		802.1X, IPsec, Secure print, Secure Fax, SNMP v3, IPv6, Secure HTTP (SSL/TLS), LDAP (SASL), Network Authentication, USB port security, Audit Log, Xerox® Secure Access Unified ID System®, Common Access Card Enablement, IP Filtering, FIPS140-2 encryption, 256-bit hard disk encryption, image overwrite (on-demand, scheduled and immediate), Software Verification Test, SMTP over SSL, Common Criteria Certification (pending)
<b>Warranty</b>		One-year on-site warranty, earn free service coverage with Xerox eConcierge®, Xerox® Total Satisfaction Guarantee

<sup>1</sup> Maximum volume capacity expected in any one month. Not expected to be sustained on a regular basis; <sup>2</sup> Analog phone line required.

#### Device Management

CentreWare® Internet Services, CentreWare Web, Smart eSolutions®, WebJet Admin Interface, Tivoli, Apple® Bonjour, Low supplies email alerts, Proactive Supplies Management

#### Print Drivers

Windows® XP/2003 Server/2008 Server/Vista/7, Mac OS® 10.5 and higher, Oracle® Solaris 9, 10, Redhat® Enterprise Linux®, Fedora Core 12-15, HP-UX® 11iv2, IBM® AIX 5, SUSE®, Xerox® Global Print Driver®, Xerox® Mobile Express Driver®

#### Media Handling

Duplex Automatic Document Feeder: 16 lb. bond to 45 lb. cover / 60 – 120 gsm; MPT: 100 sheets; 16 lb. bond to 80 lb. cover / 60 – 220 gsm; Custom sizes: 3 x 5 in. to 8.5 x 14 in. / 76 x 127 mm to 216 x 356 mm; Additional 525-sheet trays 2–5: 16 lb. bond to 80 lb. cover / 60 – 220 gsm; 1,800-sheet High-Capacity Feeder: 16 lb. to 32 lb. bond / 60 – 122 gsm; Media types: Lightweight,

Plain, Lightweight Cardstock, Cardstock, Hole punched, Letterhead, Recycled, Preprinted, Transparencies, Labels, Envelopes. For a complete list, visit [www.xerox.com](http://www.xerox.com).

#### Certifications

FCC Part 15, Class A, FCC Part 68, CE Mark applicable to Directives 2006/95/EC, 2004/108/EC and 1999/5/EC, UL 60950-1/CSA 60950-1-07, 2nd Edition

#### Supplies

Genuine Xerox® Solid Ink	
6 Sticks Cyan: 16,900 pages*	108R01014
6 Sticks Magenta: 16,900 pages*	108R01015
6 Sticks Yellow: 16,900 pages*	108R01016
6 Sticks Black: 18,000 pages*	108R01017
Convenience Stapler refill cartridge	108R00823
Finisher Stapler refill cartridge	008R12964

#### Routine Maintenance Items

Cleaning Unit (Standard Capacity): 10,000 pages	109R00784
Cleaning Unit (Extended Capacity): 30,000 pages*	109R00783

#### Options

525-sheet Tray	097S04383
1,800-sheet High-Capacity Feeder	097S04382
Stand with Storage Drawer	097S04388
650-sheet Finisher	097S04324
Foreign Device Interface	097S04408
Common Access Card Enablement Kit	498K17546
Wireless Network Adapter	
–N. American power converter	097S03740
–Euro power converter	097S03741
–UK power converter	097S03742

\* Average standard pages. Declared Yield in accordance with ISO/IEC 24711. Yield will vary based on image, area coverage and print mode.



For more information, call **1-877-362-6567** or visit us at [www.xerox.com/office](http://www.xerox.com/office)

©2012 Xerox Corporation. All rights reserved. Contents of this publication may not be reproduced in any form without permission of Xerox Corporation. XEROX®, XEROX and Design®, ColorQube® and CentreWare® are trademarks of Xerox Corporation in the United States and/or other countries. Adobe® and PostScript® 3™ are registered trademarks or trademarks of Adobe Systems, Incorporated. PCL® is a registered trademark of Hewlett-Packard. As an ENERGY STAR® partner, Xerox Corporation has determined that this product meets the ENERGY STAR guidelines for energy efficiency. ENERGY STAR and the ENERGY STAR mark are registered U.S. marks. All other trademarks are the property of their respective manufacturers. The information in this brochure is subject to change without notice. 4/12 BR1430 890BR-01UC

